

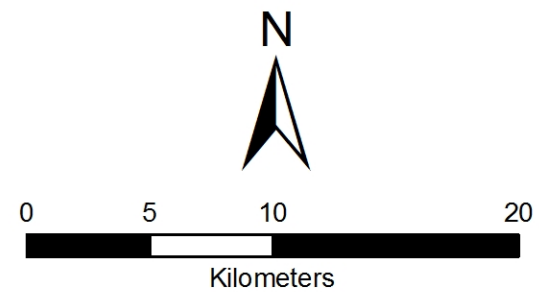
Capture Frequency

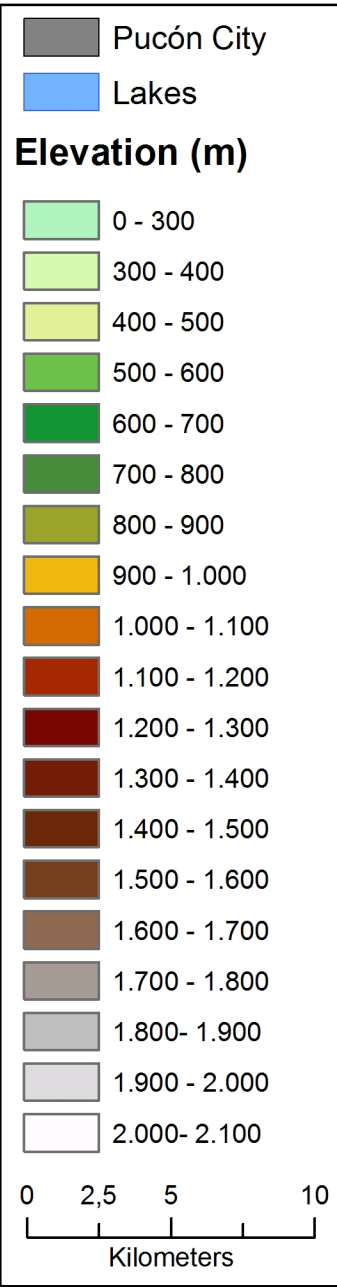
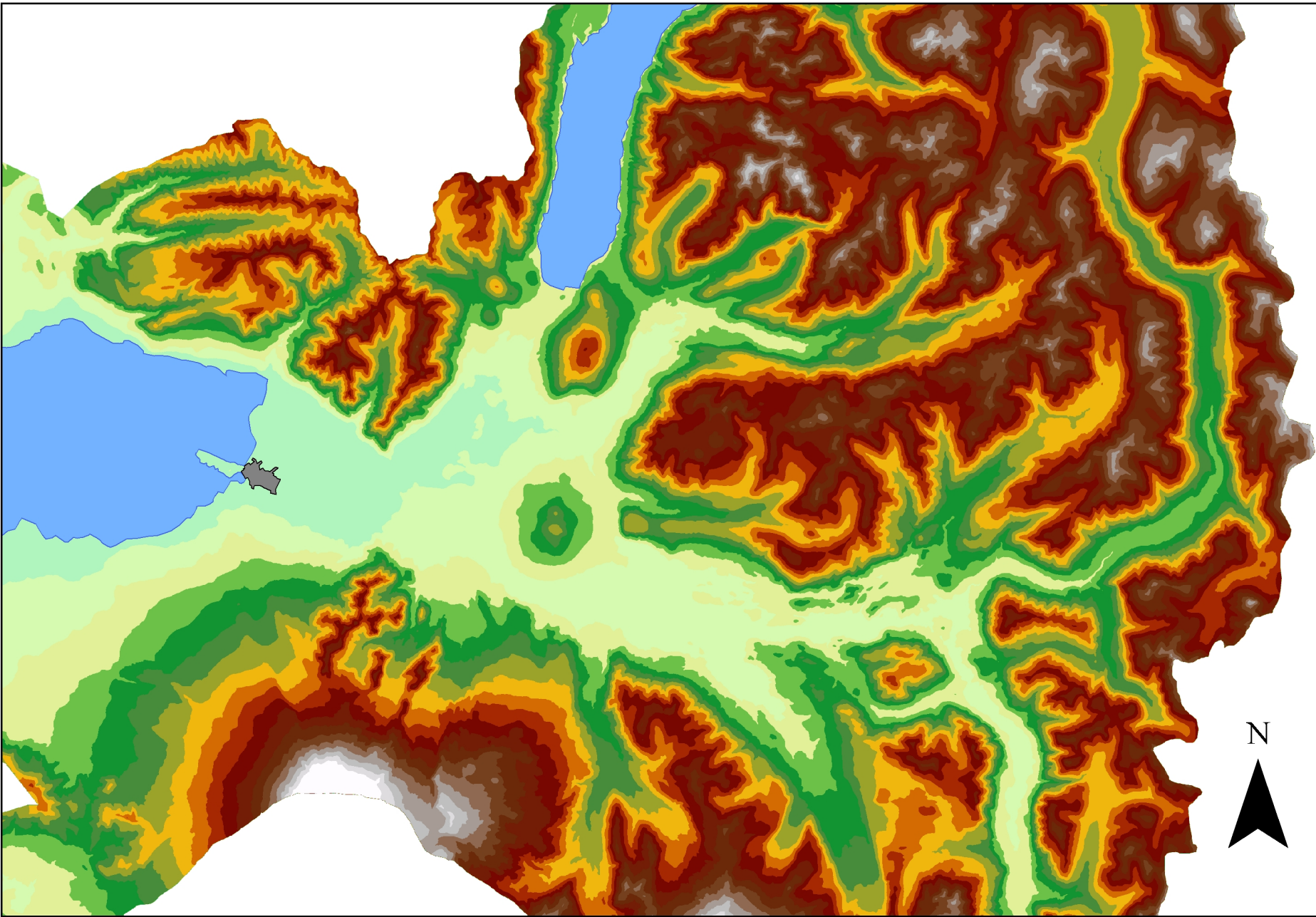
- 0,000
- 0,001 - 2,000
- 2,001 - 5,000
- 5,001 - 12,000
- 12,001 - 17,000

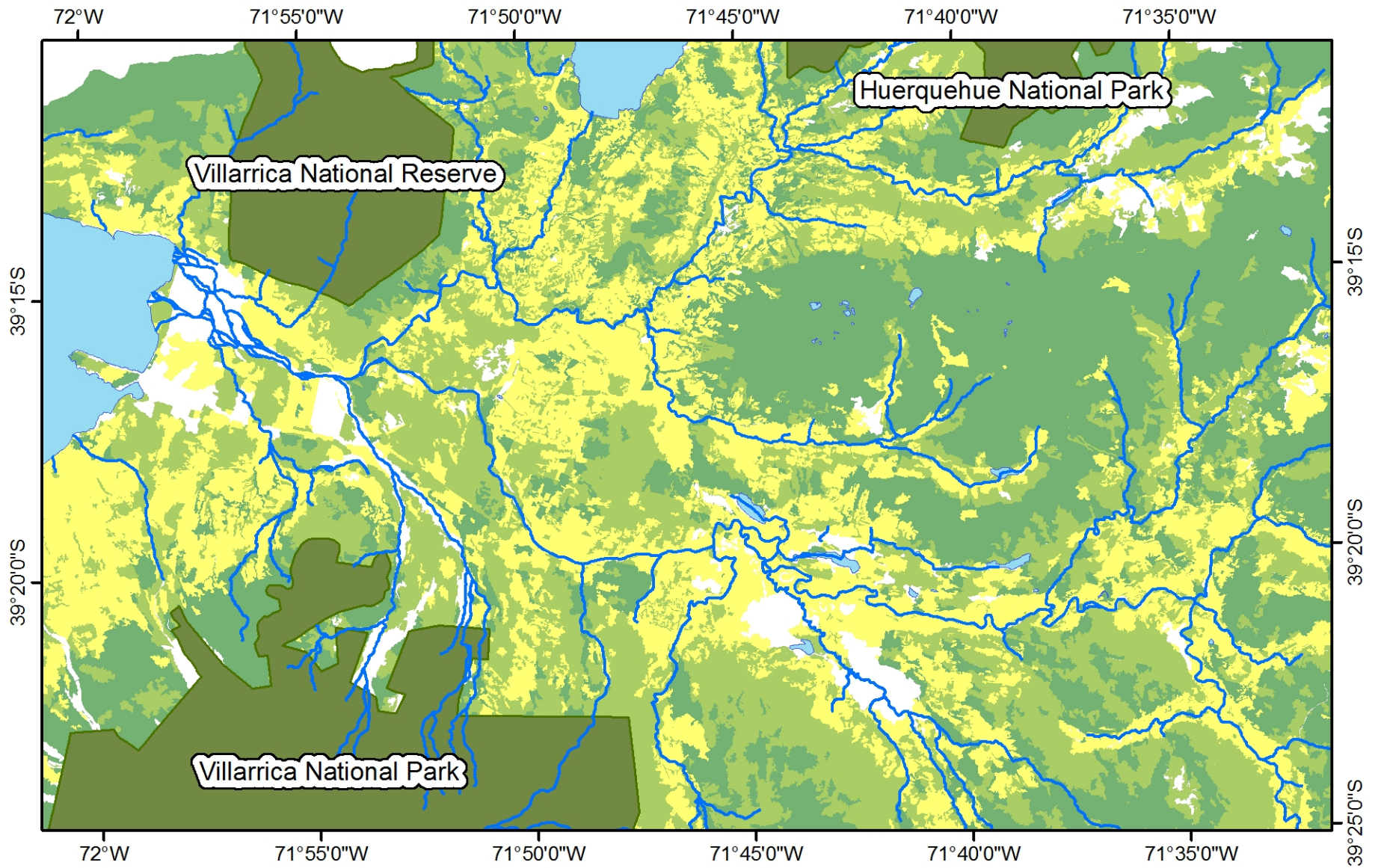
Countour level (m)

- 400
- 800
- 1200





— Rivers

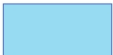








Land Use / Land Cover

-  Agriculture and plantation forest
-  Native forest
-  State protected areas
-  Regrowth forest

-  Lakes
-  Other
-  Rivers

